

# 130 Project

Nicole McCarthy

9 March 2022

Intro:

The “Depression” data set will be the focal point for this Exploratory Data Analysis. This data set consists of information collected from the first array of interviews with 294 Los Angeles County adult residents. These interviewees were asked about their overall mental and physical health as well as a variety of lifestyle practices and general demographics. The “age” and “sex” variables will be analyzed to determine whether there is a correlation between someone’s age and sex and whether or not they have depression. Both “age” and “sex” variables are categorical values. Age was reported between 18 and 89 years. The “sex” variable provided three potential responses, 0,1 or 2 (Choose not to identify, Male, or Female).

```
depress <-  
read.delim("/Users/nicolemccarthy/Desktop/depress_081217.txt",  
header=TRUE, sep="\t")  
dim(depress)  
## [1] 294 37
```

## Including Plots

You can also embed plots, for example:

```
##      Min. 1st Qu.  Median    Mean 3rd Qu.    Max.  
##  18.00  28.00   42.50   44.41  59.00   89.00  
  
summary(depress$ age, depress$sex)  
  
##      Min. 1st Qu.  Median    Mean 3rd Qu.    Max.  
##  18.00  28.00   42.50   44.41  59.00   89.00  
  
round(prop.table(table(depress$sex, depress$age), margin=1),3)  
  
##  
##      18    19    20    21    22    23    24    25    26    27  
28    29  
##  0 0.018 0.018 0.036 0.018 0.045 0.018 0.009 0.018 0.045 0.018  
0.009 0.018  
##  1 0.016 0.016 0.011 0.022 0.022 0.049 0.044 0.022 0.022 0.011
```

```

0.022 0.011
##
##      30      31      32      33      34      35      36      37      38      39
40      41
##    0 0.018 0.027 0.054 0.000 0.009 0.009 0.027 0.027 0.009 0.009
0.036 0.000
##    1 0.022 0.011 0.022 0.027 0.044 0.016 0.016 0.011 0.005 0.000
0.005 0.005
##
##      42      43      44      45      46      47      48      49      50      51
52      53
##    0 0.027 0.009 0.009 0.018 0.018 0.018 0.027 0.027 0.018 0.009
0.009 0.009
##    1 0.033 0.033 0.005 0.011 0.005 0.022 0.005 0.005 0.016 0.027
0.016 0.005
##
##      54      55      56      57      58      59      60      61      62      63
64      65
##    0 0.000 0.009 0.009 0.009 0.027 0.036 0.027 0.018 0.027 0.009
0.027 0.009
##    1 0.016 0.016 0.011 0.027 0.022 0.027 0.022 0.016 0.005 0.005
0.000 0.022
##
##      66      67      68      69      70      71      72      73      74      75
77      78
##    0 0.000 0.000 0.000 0.000 0.018 0.000 0.009 0.018 0.009 0.000
0.009 0.009
##    1 0.016 0.011 0.022 0.005 0.016 0.016 0.005 0.000 0.011 0.005
0.005 0.005
##
##      79      80      81      82      83      89
##    0 0.009 0.000 0.009 0.000 0.009 0.000
##    1 0.005 0.005 0.005 0.005 0.022 0.005

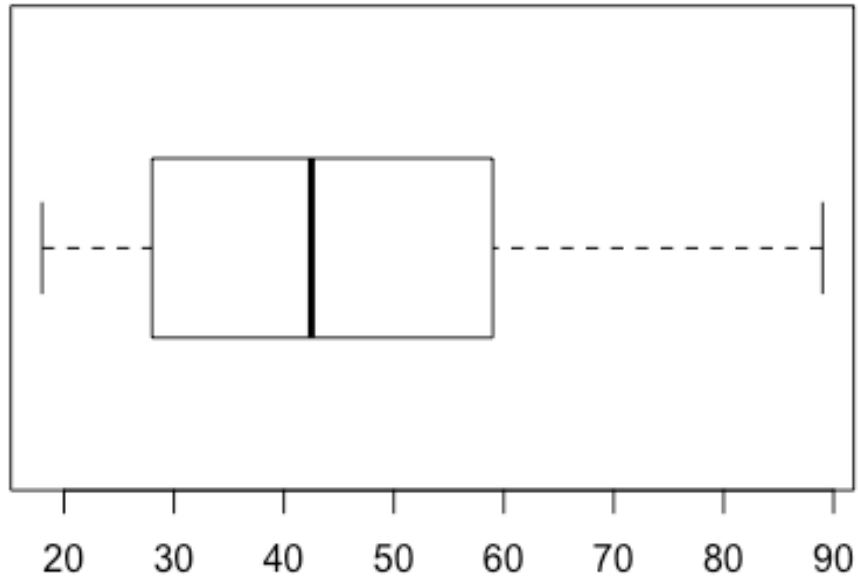
```

```

boxplot(depress$age, horizontal =TRUE, main= "Distribution of Age in
the Study of Depression")

```

## Distribution of Age in the Study of Depression

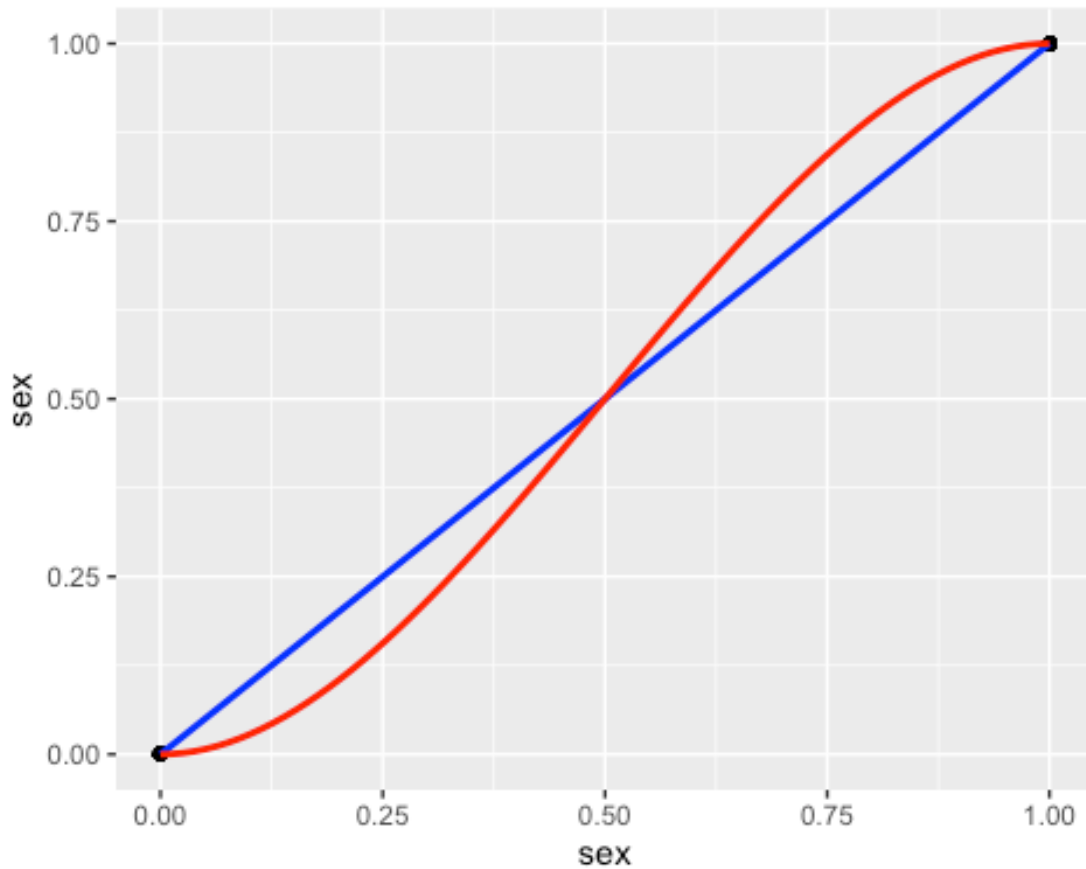


This ggplot shows the age range of the individuals in the data set, it ranges from the youngest being 18 and the oldest being 89 and the mean of the group was 44.

```
ggplot(depress, aes(x= sex, y= sex)) + geom_point() +  
  geom_smooth(se=FALSE, method="lm", color="blue") +  
  geom_smooth(se=FALSE, color="red")  
  
## `geom_smooth()` using formula 'y ~ x'  
## `geom_smooth()` using method = 'loess' and formula 'y ~ x'  
## Warning in simpleLoess(y, x, w, span, degree = degree, parametric =  
## parametric, : pseudoinverse used at -0.005  
## Warning in simpleLoess(y, x, w, span, degree = degree, parametric =  
## parametric, : neighborhood radius 1.005
```

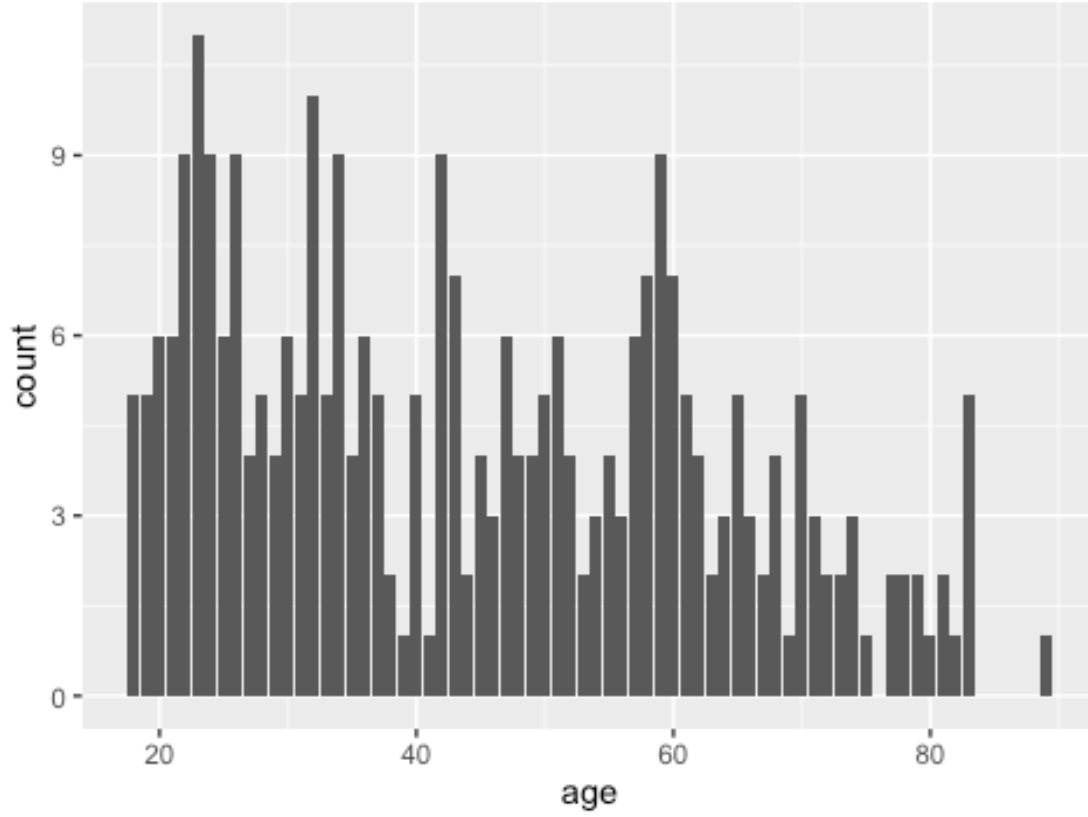
```
## Warning in simpleLoess(y, x, w, span, degree = degree, parametric =  
## parametric, : reciprocal condition number 0
```

```
## Warning in simpleLoess(y, x, w, span, degree = degree, parametric =  
## parametric, : There are other near singularities as well. 1.01
```



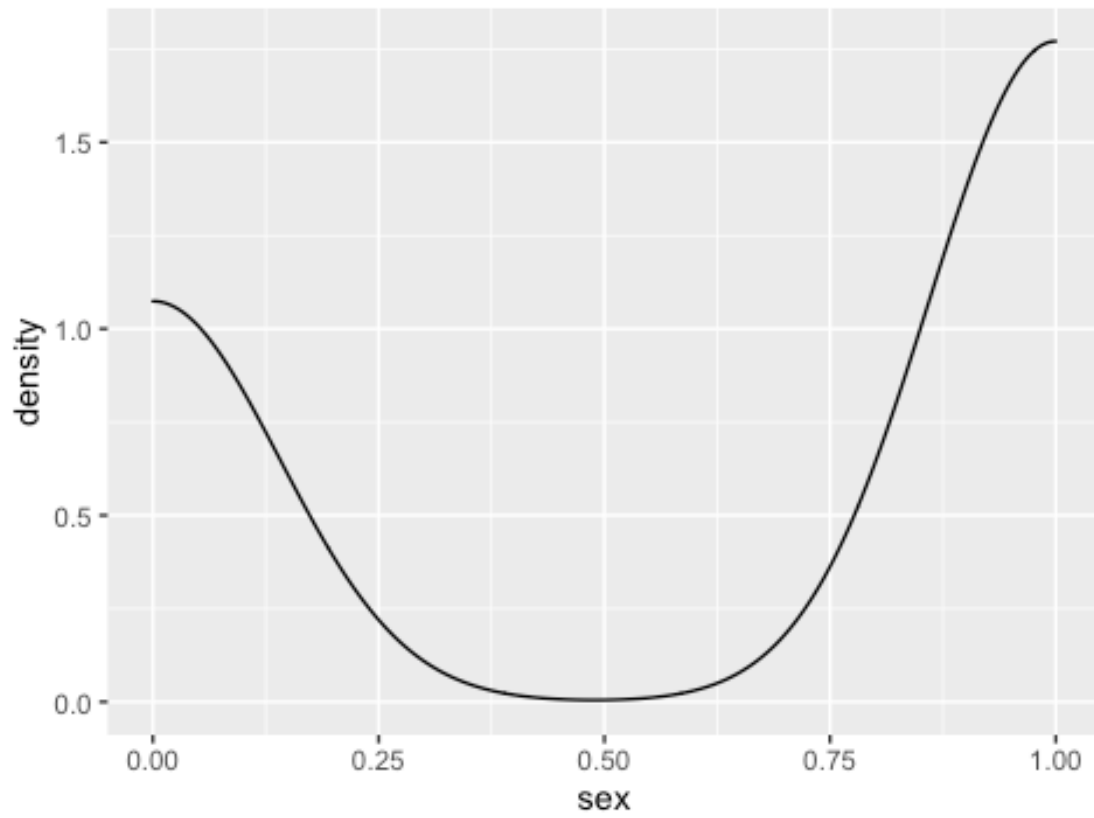
```
ggplot (depress, aes(x= age, fill = sex)) + geom_bar() + ggtitle("Age  
and Sex of Individuals")
```

## Age and Sex of Individuals

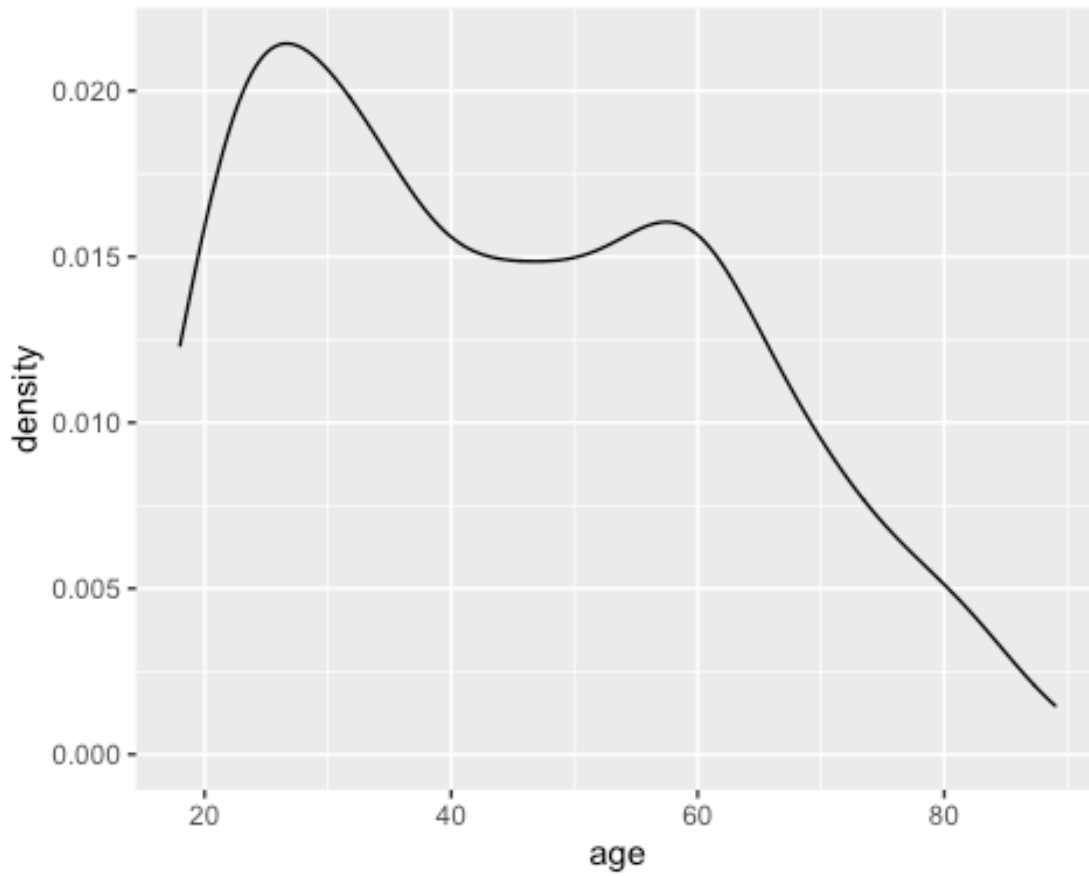


```
ggplot (depress, aes(x=sex, fill= sex)) +geom_density(alpha=.5) +  
ggtitle("Sex of Individuals")
```

Sex of Individuals

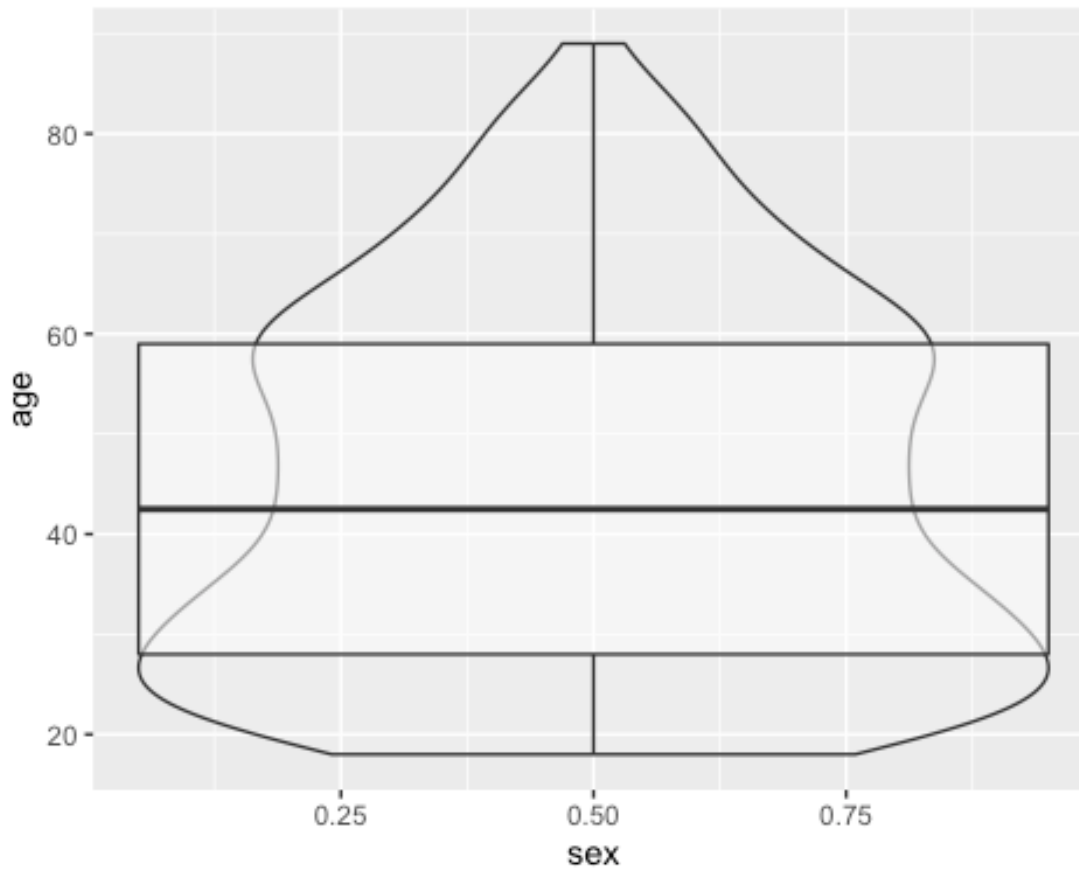


```
ggplot(depress, aes(x=age, fill= sex)) + geom_density(alpha=.3)
```



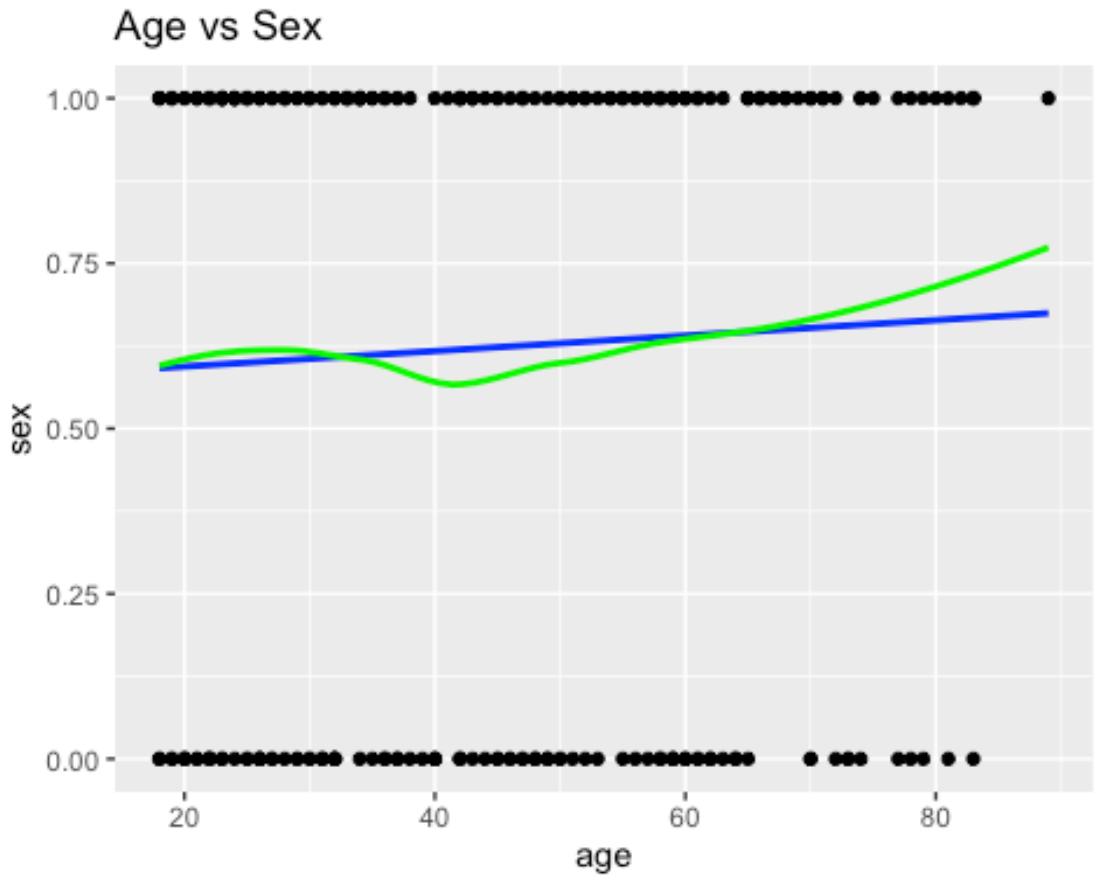
```
ggplot(depress, aes(x= sex, y= age, fill= sex)) +  
  geom_violin(alpha=.1) +  
  geom_boxplot(alpha=.5, width=.2)
```

```
## Warning: Continuous x aesthetic -- did you forget aes(group=...)?
```



```
ggplot(depress, aes(x= age, y=sex)) + geom_point() +  
geom_smooth(se=FALSE, method="lm", color="blue") +  
geom_smooth(se=FALSE, color="green")+ ggtitle("Age vs Sex")  
  
## `geom_smooth()` using formula 'y ~ x'  
  
## `geom_smooth()` using method = 'loess' and formula 'y ~ x'
```





Conclusion: I looked into the depression data set to determine whether or not there was a correlation between the two variables, sex and gender and if the sex or gender had an effect on whether or not they had depression. This data set ranged from 18 to 89 years old and overall, I found that the most common age to be diagnosed with depression is 44 years old.